

How to Disconnect PM5 with Host device?

This article describes the ways to disconnect PM5 with the host device.

There are general (manual) ways and automatic way (Bluetooth disconnection timeout).

APPLIES TO

- PM5
 - Ring Control
 - Disconnect button: v2.6.2 and higher
 - Bluetooth disconnection timeout: v2.10.0 and higher
-

Disconnection

General way

To close the connection between ring scanner and host device,


- Turn off Bluetooth on the host device
- Reboot ring scanner
- Tap-to-Pair (Do when the PM5 is connected. Supports only for HID mode)
- Scan disconnect code (Download the QR code below)

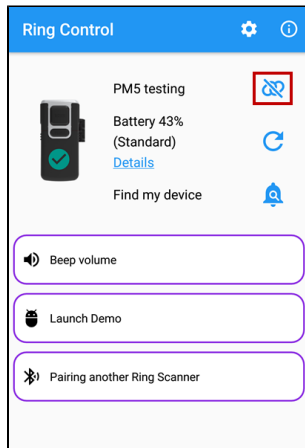
PM5 Disconnect.



via Ring Control app (v2.6.2 and higher)

From Ring Control app v2.6.2, a disconnect button was added.

You can close the connection on the Ring Control app easily. Tap the disconnect button  on the connected screen.



Bluetooth Disconnection Timeout



Supporting Ring Control Version

Bluetooth Disconnection Timeout has been added to Ring Control app from v2.10.0.

Update the app to the latest version to use this function.

From Ring Control v2.10.0, the Bluetooth Disconnection Timeout setting has been added.

This setting closes the connection automatically when the ring scanner and app are not in use, such as shift time, etc. Then the next user can make a new connection smoothly with the ring scanner.

Disconnection occurs when the timeout you set elapses while the ring scanner and app are **NOT IN USE**.

Find more detail from

[PM5 Bluetooth Disconnection Timeout](#)



RELATED ARTICLES

- [Reconnect PM5 to the Previously Connected Host Device](#)
- [Creating PM5 Connect Barcode](#)
- [Find PM5 Information in RingControl](#)
- [PM5 Bluetooth Disconnection Timeout](#)
- [Change PM5's Bluetooth Class](#)