

# Single Scan Mode

Single scan mode is newly added to Point Mobile devices. There are three modes as below.

- One Shot decoding (Default)
- Press decoding
- Release decoding

Read this article to find out the differences and how to use each decode mode.

## One Shot decoding / Normal decode

Depending on the OS version, the name of One Shot decoding may be displayed as Normal decode.

## APPLIES TO

- Android 7
  - PM550: 55.X2 (Apr 27 2021) or above
- Android 8
  - PM85: 85.09 (Jun 23 2021) or above
- Android 9
  - PM85: 85.21 (Nove 18 2021) or above
  - PM90: 90.05 (Oct 30 2021) or above
  - PM451: 41.03 (May 28 2021) or above
- And other Android 10 or higher models

## Description of Single scan mode setting

Single scan mode setting controls the way of on/off the scan trigger. Look at the comparison table below.

	Trigger on	Trigger off
One Shot decoding	Press scan button	Release scan button
Press decoding	Press scan button	Press and release scan button again
Release decoding	Press and release scan button	Press and release scan button again

If you just press (not release) the scan button in release decoding mode, only the aimer is turned on.

In this state, the scanner cannot decode the barcode even if you aim the barcode properly.

But, it is useful when you have to target an exact barcode you want to decode among the barcode book.



### Touch Scan

The TouchScan (Scan button on the screen) behaves the same as hardware scan button, but when the TouchScan moves, trigger turns off.

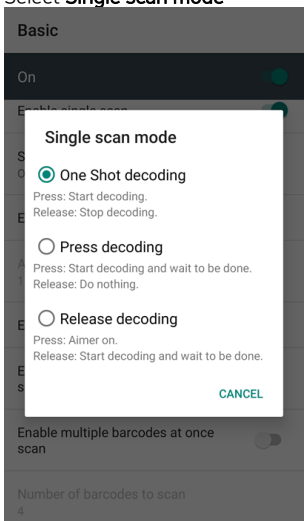
## How to set Single scan mode

You can setup the single scan mode from the device or Scan2Stage.

To setup the mode using device,

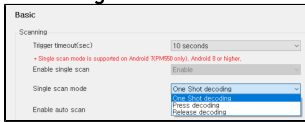
1. Navigate to **ScanSettings** from **EmKit** or **Settings**
2. Tap **Basic**

3. Select **Single scan mode**



To setup using Scan2Stage, (Supports Scan2Stage v10.0.12 and above)

- 1. Execute Scan2Stage
- 2. Go to **Scanner Setting > Basic**
- 3. Select **Single scan mode**



RELATED ARTICLES

Content by label

There is no content with the specified labels