

# PM3 ScanSetting via Demo Application

You can set up scan settings, for example, prefix & suffix, enable/disable symbologies to PM3.

Because PM3 has no keypad, detail scan setting can be set with PM demo application.

The demo application is available on Windows, android and even iOS. Therefore, you can use the app on your PC or mobile computer.

---

## APPLIES TO

### PM3

#### Connect device

- Windows Mobile 6.5
- Windows Phone 8.1
- Android 4.0.3 or above
- iOS 7.0.3 or above
- Support all version on PC

---

## Connect PM3 to Your Device


First, install and execute Demo application on your device.

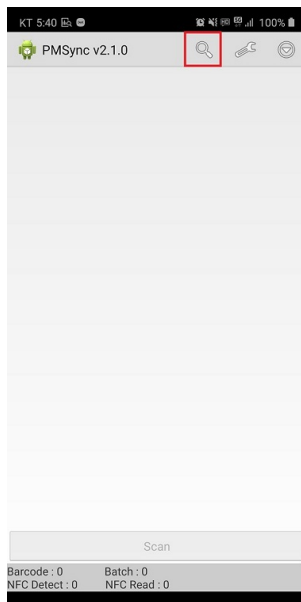
Then, on PM3, navigate to Menu > Pairing to ready to pair with your device.

---

## Android

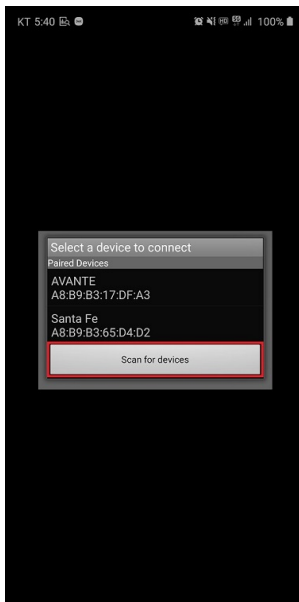
1

Tap  to search the nearby Bluetooth devices



2

Tap Scan for devices to search new Bluetooth device



3

Select the PM3 in available devices list.

If a dialog asking pin code show up, type 0000



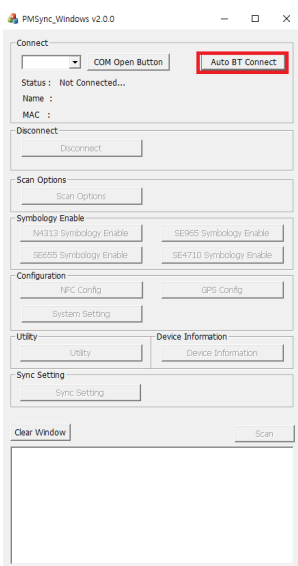
If you set Connect Mode as 'SPP' on PM3, no need to input the pin code.

## Windows

When the Demo app (PMSync) is not operated properly

Install the [Microsoft Visual C++ 2008 Service Pack 1 Redistributable Package \(x86\)](#) and try again.

Click Auto BT Connect and select the PM3.

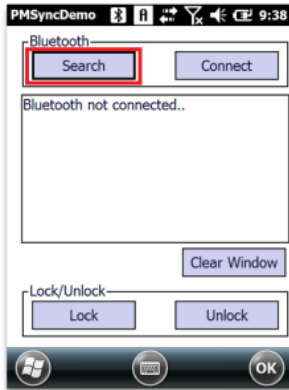


---

## Windows Mobile

1

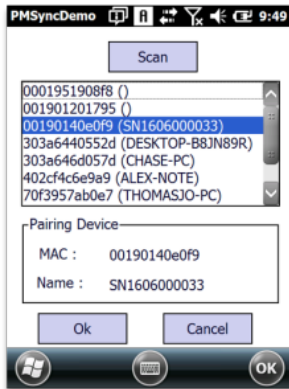
Click Search button



2

Click Scan button to search the nearby Bluetooth devices.

When the Bluetooth devices are listed up, select PM3 with serial number and click Ok.



---

## Windows Phone

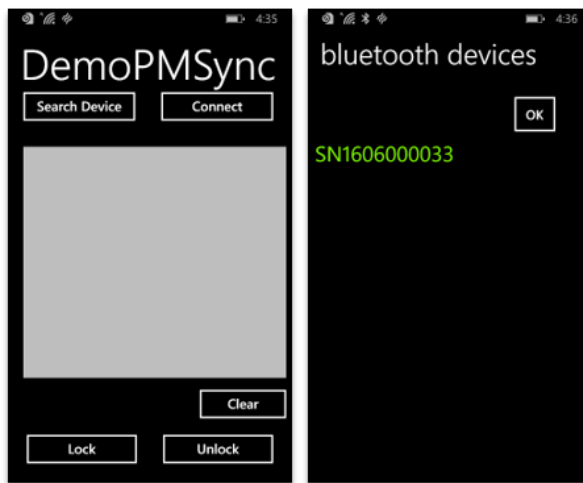
1

Connect the PM3 with your windows phone in Settings > Bluetooth

2

On DemoPMSync application, Click Search Device button

Then, select PM3 by SN and Click OK button



3

Click Connect to establish the connection

## iOS

1

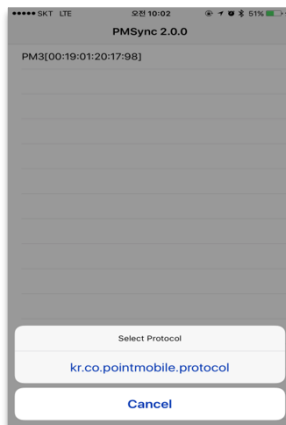
Connect your iOS device to the PM3 in Settings > Bluetooth

2


Run PMSync application and Choose the PM3

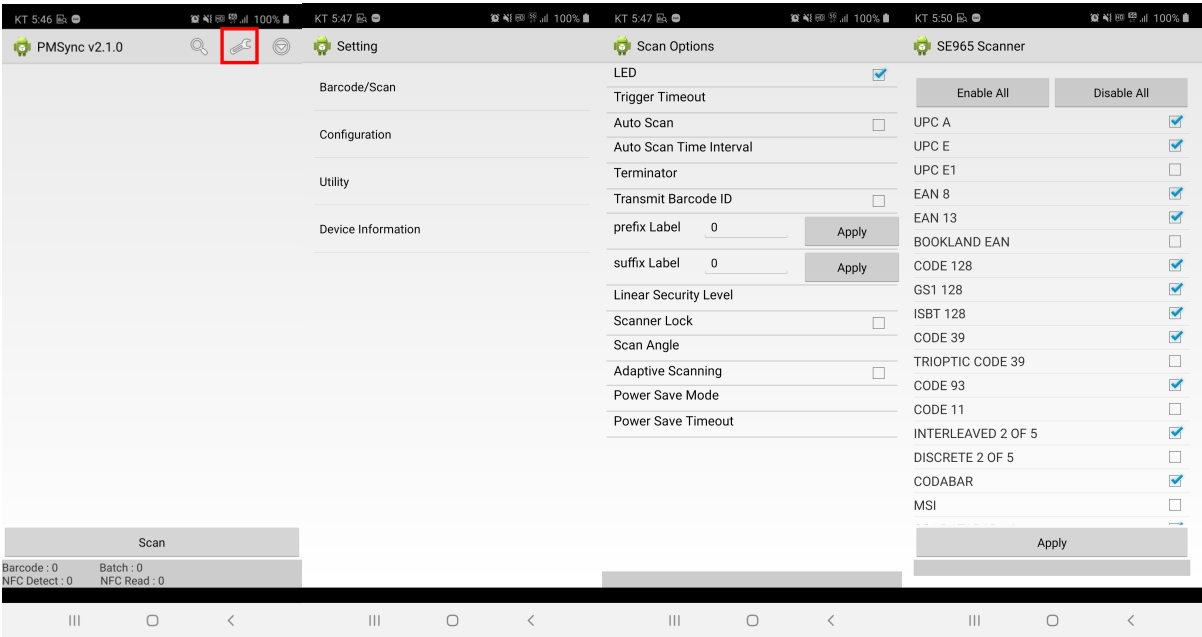
3

Select the protocol



# Set Scan Setting Detail

In PMSync application, tap  to go to Setting menu. You can set prefix, suffix, symbologies' detail setting, etc which cannot set in PM3. And you can find the information about PM3 at once in Device Information.



## RELATED ARTICLES

- [\[PM3\] Reading count is displayed '0' only](#)
- [\[PM3\] Keep showing MS Office popup on PC](#)
- [\[PM3\] Cannot get scan data](#)
- [Changed PM3 Comparison](#)
- [PM3 Reset Date & Time after Rebooting](#)