

# Custom Key Mapping on WinCE Device

Buttons can be customized to execute different functions using the Program Button solution. This feature allows you to make shortcut buttons and will increase your productivity.

## APPLIES TO

PM60, PM200, PM251, PM260, PM450 with Windows CE

## How to Use Program Buttons?

1

Navigate to Start > Settings > Control Panel

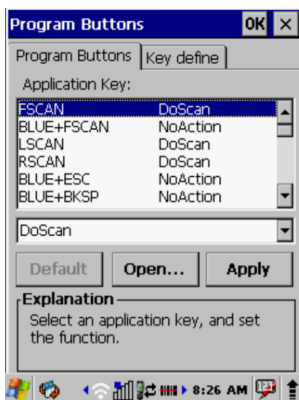
2

Open Program Buttons

3

Select one of the keys in Application Key list

4



Depending on what you want to change, choose one of the following three actions

- **As one of the predefined features**
  - Press select list box
- **As default features**
  - Press Default
- **As an application installed in your device**
  1. Press Open...
  2. Move to a folder which your application is located
  3. Select an execution file(file format = .exe) of your application

5

Click Apply to apply the changes

6

To exit the Program Buttons, press OK from the command bar or press the ENT key on the keypad

---

Below is a video that shows how to map a function key with SIP(Software Input Panel) on PM450.

## How to implement SIP Toggle



### RELATED ARTICLES

- [Avoid Entering Sleep Mode with Power Button](#)
- [Set Key Macro in Program Buttons](#)
- [Map Other Functions to the Navigation Bar Buttons](#)
- [Hide/Show Virtual Keyboard with Floating Button](#)
- [Hide or Toggle Virtual Keypad \(SIP\)](#)